

# Luminator Series



Harsh Environment  
Emergency Lighting



# Engineered Compliance

- UL 924 Listed
- UL Damp & Wet Location listing standard 0 to 40 C
- Exceeds NEC, IBC, NFPA requirements for emergency lighting
- NSF Class II listed
- Buy American Compliant



# Product Overview

## Product Configurations

- 6-VDC models Lead & Nicad
  - 25, 50 & 75-watt
- 12-VDC models Lead & Nicad
  - 50 to 150-watt

## Standard Attributes

- UL damp & wet location listed  
32 F (0 C) to 104 F (40 C)
- NSF class II splash zone
- Smart Charger Diagnostics



# Product Overview

## Housing

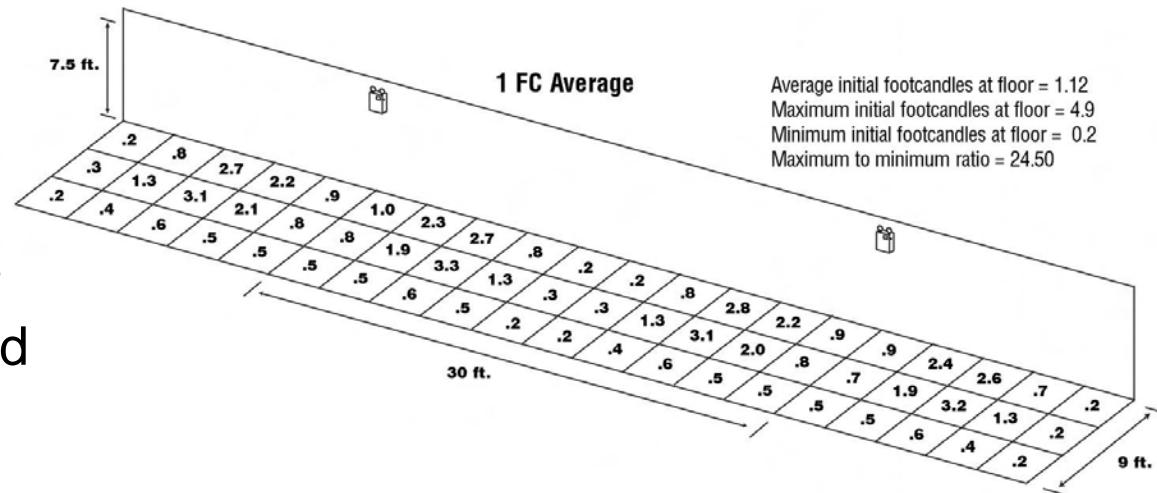
- Fiberglass reinforced polyester
- Fully gasketed hinged door
- Dual breather vents
- View window for ammeter/voltmeter options



# Product Overview

## Lamp Head Assemblies

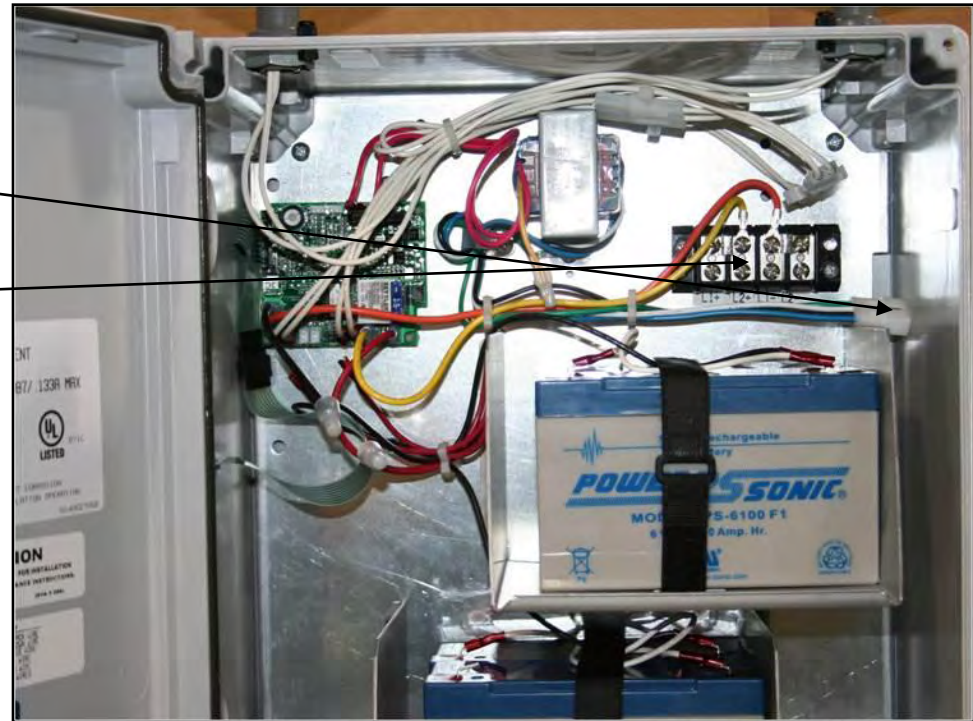
- PAR 36 sealed beam lamp heads
  - 6VDC 8 to 25-watts;
  - 12VDC 8 to 50-watts
- ABS or Lexan material based on lamp wattage
- Complete horizontal and vertical adjustment
- IES photometry and point by point assistance available



# Product Overview

## Electrical/Mechanical

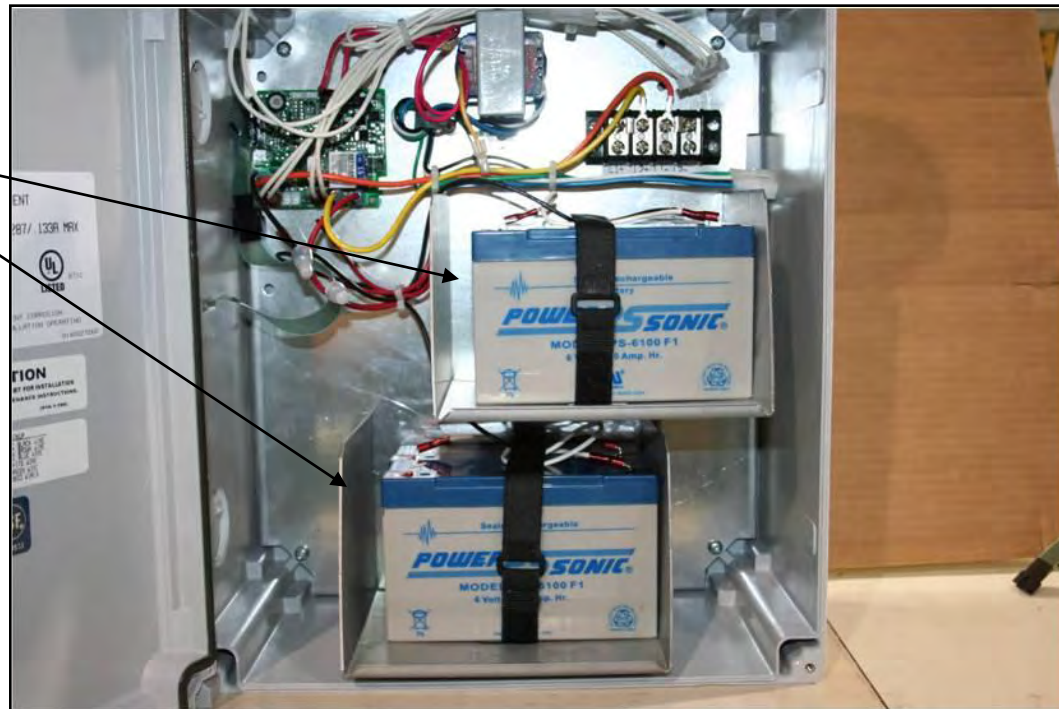
- Quick connect harness
  - Input power
- Remote Load
  - Output terminal block



# Product Overview

## Electrical/Mechanical

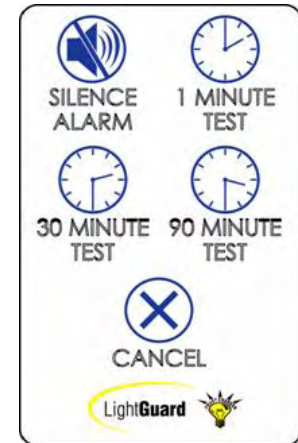
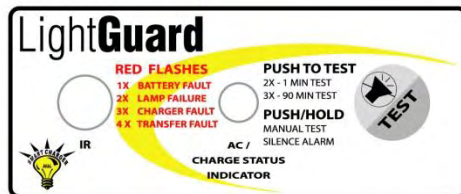
- Battery trays
  - One or two based on capacity rating



# Product Overview

## Electronics

- Smart Charger Diagnostics
- On-board IR receiver
- SCIR user remote (optional)



# Electronics

## Smart Charger

- Microprocessor driven
- Temperature compensated
- Standard diagnostics



# Electronics

## Standard Features

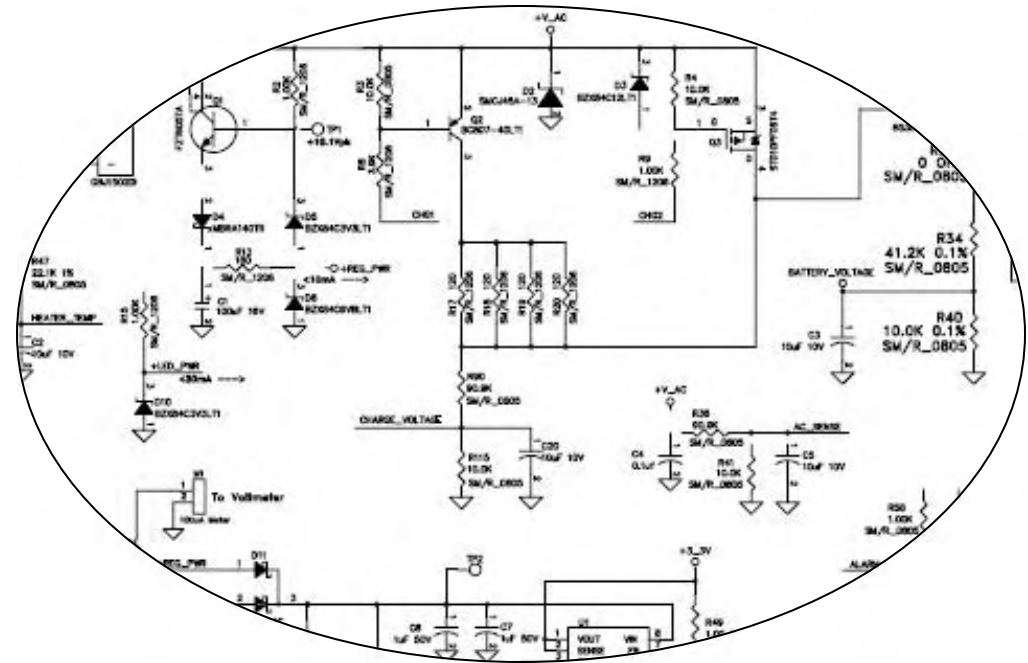
- Transformer isolated input
- AC power indicator
- Charge status indicator
- Visual fault indicator
- Audible user interface
- On-board IR receiver



# Electronics

## Standard Features

- AC lockout mode (AC line latch)
- Brownout protection
- Low-voltage battery disconnect (LVD)
- Temperature compensated charger equal to 3mV/C
- Reverse polarity detection (battery)

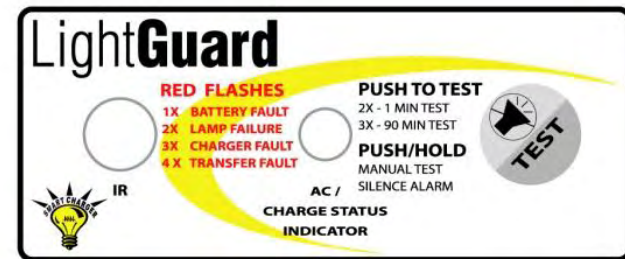


# Electronics

## Standard Diagnostics

Continuous, real-time monitoring

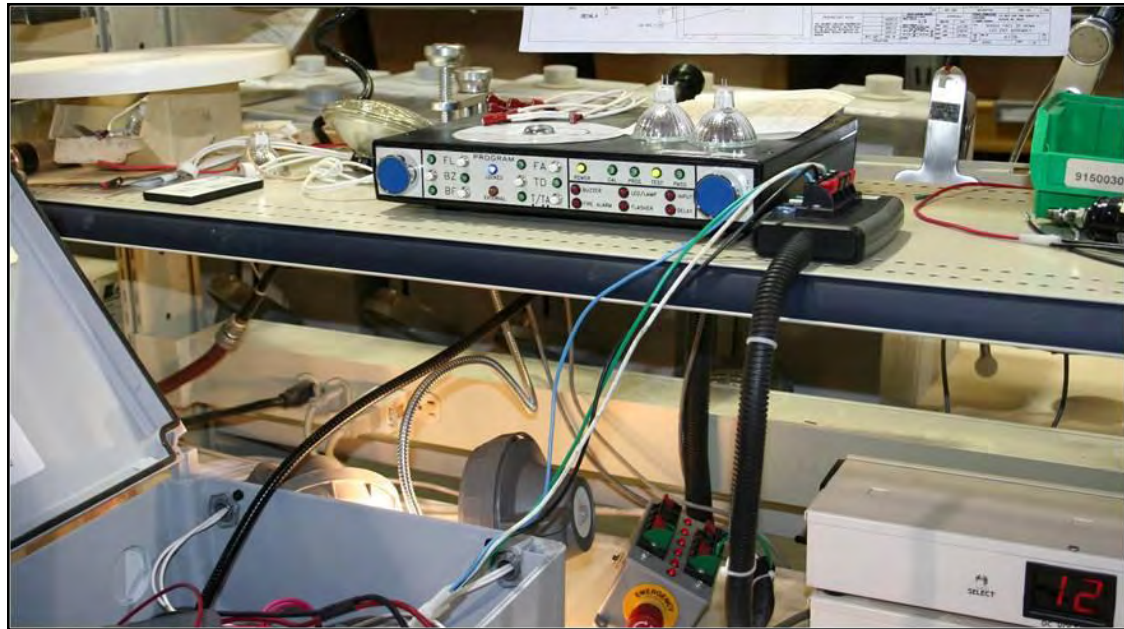
- Battery fault
- Battery disconnect
- Charger fault
- Load loss detection (10%)
- Transfer fault



# Project Versatility

## Factory Options, Computer-tested

- Self-testing
  - Non-audible
  - Audible
- Time delay
- Voltmeter
- Ammeter
- AC input fuse
- AC disconnect switch
- Battery disconnect switch



# Product Accessories

## Remote Test Device

- Activate required monthly and annual testing remotely.

