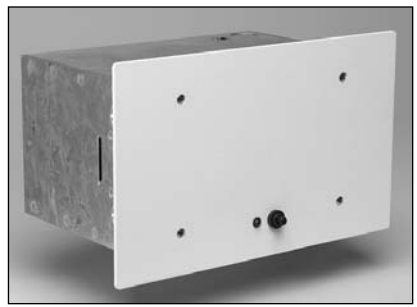


Type No. _____
 Job Name _____
 Catalog No. _____



Shown: LPM50LW



LPM

Emergency Power for Support of Egress Lighting

- 12 Volt, 50 and 75 Watts
- Sealed Lead Calcium Battery

Housing

- The LPM rough-in enclosure is fabricated from 20 gauge die formed galvanized steel
- The trim plate is fabricated from 12-gauge steel
- Available with choice of white or black trim plate colors
- Knockouts for conduit as well as screw hole knockouts for mounting to joists are conveniently location on the backbox
- The LPM meets the Buy American requirements

Battery

- Maintenance free, sealed lead calcium battery has an expected service life of 5 years
- The LPM50 uses two 100-1-136 batteries and supplies 50 watts at 12 VDC for 90 minutes
- The LPM75 uses two 100-1-188 batteries and will supply 75 watts at 12 VDC for 90 minutes

Illumination

- ***See Selections on back page**
- Suggested emergency power source for the "NightWatch" interior/exterior low level LED luminaire, the "LEF" MR16 exterior wall/soffit remote, and the "LRE" recessed MR16 exterior remote (See back page)
- Any 12 VDC remote emergency luminaire can also be powered by the LPM

Electronics

- 120/277 VAC, 60 Hz, Dual Input
- Utilizes an automatic voltage regulated charging system
- 2-state charger eliminates the need for periodic battery exercising
- It is recommended that a monthly load test of a minimum of (1) minute be performed and recorded to satisfy NFPA 101 life safety requirements
- Momentary test switch and normal power indicator lamp are located on the trim plate to assist testing and visual inspection
- Low voltage disconnect feature (LVD) prevents deep battery discharge

Code Compliance

- UL 924 listed
- UL 924 damp location listed optional* (50°F to 104°F)
- NFPA 101, NEC, BOCA, OSHA, and IBC illumination standards
- *50 watt models only

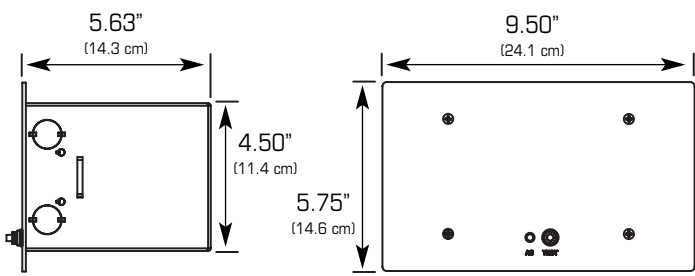
Warranty

- Electronics: 3 years
- Battery: 1 year full, 4 years pro-rata

Electrical Specifications

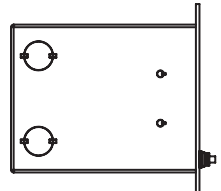
LPM50	120 VAC	.22 A
	277 VAC	.11 A
LPM50DL	120 VAC	.21 A
	277 VAC	.11 A
LPM75	120 VAC	.22 A
	277 VAC	.11 A

Dimensions



Ordering Information

LPM		L			
SERIES	OUTPUT WATTAGE	BATTERY	HOUSING COLOR	FACTORY INSTALLED OPTIONS	ACCESSORIES (ORDER AS A SEPARATE ITEM)
LPM = LightGuard Power Module	50 = 50 Watt 75 = 75 Watt	L = Sealed Lead Calcium	W = White B = Black	DL = Damp Location* TD = Time Delay (15 min)	BHK1 = Bar Hanger Kit for Mechanical Ceilings

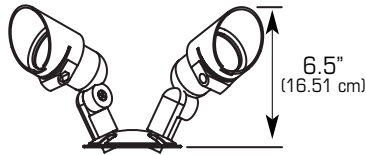
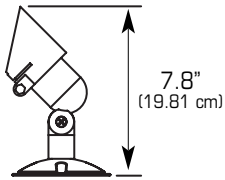


*Damp Location available on 50W version only

Recommended Product Selection to be used with the LPM Series

Additional "LEF Series" Luminaire Selections (MR16 Illumination)

*Maximum of 75 watts of connected luminaires can be operated by the LPM Series



Shown: LEF1RBZ20WF



Shown: LEF21RBZ20WF

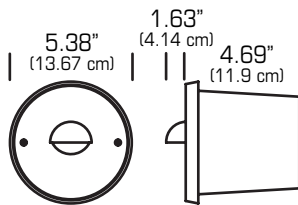
LEF SERIES	NUMBER OF HEADS	TYPE OF MOUNTING PLATE	COLOR	MR16 LAMP TYPE	ACCESSORIES (Ordered Separately)
LEF = Decorative Outdoor Remote Head	1 = Single Remote Head 2 = Double Remote Head	R = 4" Round Mounting Plate S = Single Gang Rectangular Mounting Plate	BK = Black BZ = Bronze	20WF = 12 Volt, 20 Watt Wide Flood 40° 35FL = 12 Volt, 35 Watt Flood 25° 35WF = 12 Volt, 35 Watt Wide Flood 40° 50FL = 12 Volt, 50 Watt Flood 25° 50WF = 12 Volt, 50 Watt Wide Flood 40°	ORBBK = Outdoor 4" Round Surface Mount Junction Box, Black ORBBZ = Outdoor 4" Round Surface Mount Junction Box, Bronze OSBBK = Outdoor Single Gang, Surface/Recessed 2 1/4" x 4 1/2" Junction Box, Black OSBBZ = Outdoor Single Gang, Surface/Recessed 2 1/4" x 4 1/2" Junction Box, Bronze

Additional "LRE Series" Luminaire Selections (MR16 Illumination)

*Maximum of 75 watts of connected luminaires can be operated by the LPM Series

*Lamps sold separately

SERIES
LREBK = Outdoor Remote Head Recessed, Black
LREBZ = Outdoor Remote Head Recessed, Bronze



Shown: LREBK

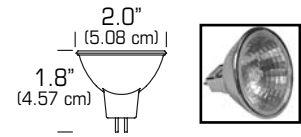
MR16 Lamp Options

Description

12 Volt, 20 Watt, 40° beam spread
12 Volt, 35 Watt, 25° beam spread
12 Volt, 35 Watt, 40° beam spread
12 Volt, 50 Watt, 25° beam spread
12 Volt, 50 Watt, 40° beam spread

How to Order

12MR20WFL
12MR35FL
12MR35WFL
12MR50FL
12MR50WFL



Additional "NightWatch" Luminaire Selections (White LED Illumination)

*Maximum of (8) luminaires on high setting, can be operated by the LPM50 Series

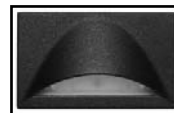
*Maximum of (13) luminaires on high setting can be operated by the LPM75 Series

*Consult factory for custom colors

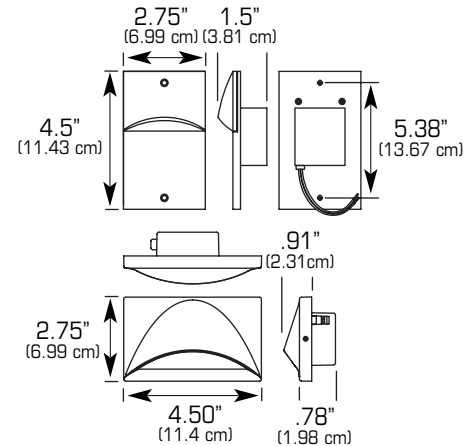
SERIES	
S1SBK = Outdoor LED Luminaire, Black	SH1SBK = Outdoor LED Luminaire, Black
S1SWH = Outdoor LED Luminaire, White	SH1SWH = Outdoor LED Luminaire, White
S1SIV = Outdoor LED Luminaire, Ivory	SH1SIV = Outdoor LED Luminaire, Ivory



SHOWN: S1SBK



SHOWN: SH1SBK



Suggested Specification

Furnish and install LightGuard's recessed emergency lighting model _____. The unit shall be constructed to meet Underwriter's Laboratories, Inc standard 924 and the National Electrical Code (NEC).

INSTALLATION AND OPERATION - Unit shall be easily field connected to a 120 or 277 VAC, 60 hertz, unswitched power source. The installation must comply with the NEC as well as other applicable codes. Upon utility power failure or brownout, the unit shall automatically and instantaneously transfer to battery power and maintain the specified load for a minimum period of 90 minutes. Upon restoration of utility power, the charger shall restore the battery to full charge within UL 924 requirements following a rated discharge of not more than 90 minutes.

CHARGING CIRCUITRY - The product shall utilize a fully automatic, voltage regulated charging system. The charging system shall maintain the battery at full capacity without the need for periodic exercising or equalization. The following features shall be standard: low voltage disconnect (LVD), Brownout protection and a labor saving AC lockout which allows the contractor to fully connect the unit during installation prior to energizing the unit with utility line voltage.

BATTERY - The battery shall be sealed, maintenance-free lead calcium with a designed life of 5 to 7 years under ambient temperatures of 65°F to 85°F. The lead calcium battery shall be fully warranted for a period not less than one year.

HOUSING - The recessed back box shall be constructed of 20 gauge galvanized steel and be capable of installation into mechanical (T-bar) or sheet rock ceilings. The faceplate shall be constructed of 12 gauge steel and provide manual test switch and AC-on indicator status.

ALL SPECIFICATIONS SUBJECT TO CHANGE WITHOUT NOTICE



272 West Stag Park Service Road • Burgaw, NC 28425
(910) 259-1131 • FAX (800) 403-6927
www.lightguard.com

L2318R12
6/11 IH